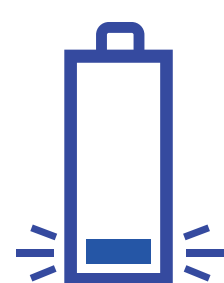




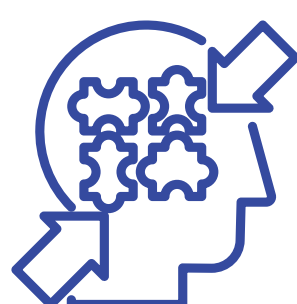
Food supplement with caffeine  
and plant extracts that help boost  
**concentration, alertness and physical  
and mental performance**



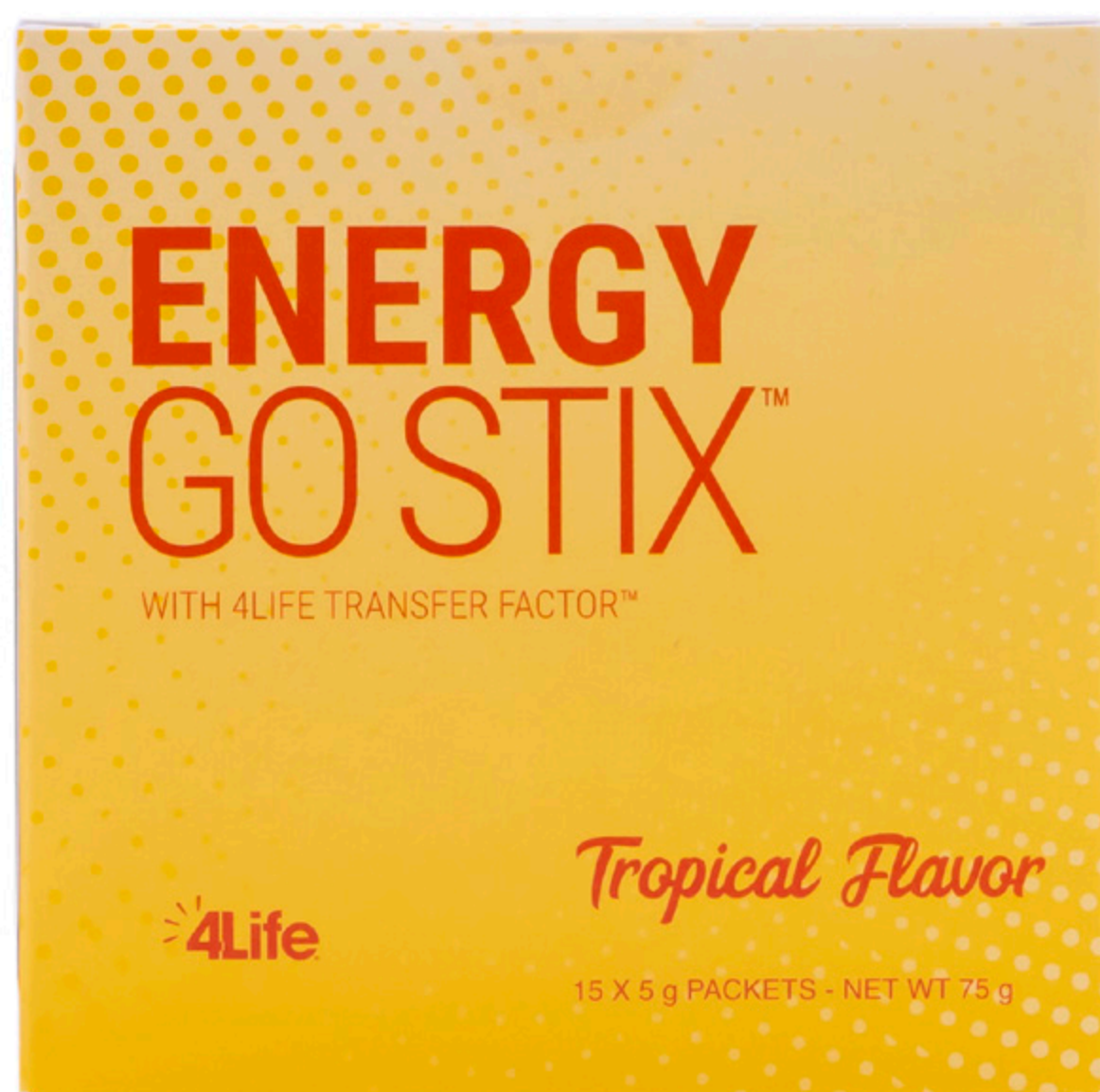
**Recovery<sup>1</sup>  
& Tiredness<sup>1;5;6</sup>**



**Physical<sup>3</sup> & Mental  
performance<sup>1;2;3;4</sup>**



**Cognitive  
activity<sup>4;5</sup>**



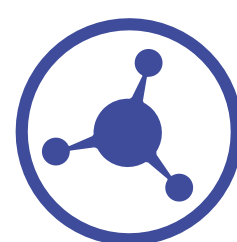
**Fat<sup>2</sup> & Glucose<sup>5</sup>  
metabolism**



**Adaptogenic  
capacity<sup>1;4</sup>**



**Concentration  
& Alertness<sup>2;5;6;7</sup>**



**4Life Transfer Factor™  
Formula<sup>8</sup>**

# ENERGY GO STIX™ **TROPICAL**

## CONCENTRATION AND ALERTNESS

Low in calories • Non carbonated • Pleasant taste  
Easy to prepare • Easy to carry and share

(1) Siberian ginseng (*Eleutherococcus senticosus*).

(2) Guarana (*Paullinia cupana*).

(3) Maca (*Lepidium meyenii*).

(4) Rhodiola (*Rhodiola rosea*).

(5) Korean ginseng (*Panax ginseng*). Chromium aids the normal metabolism of macronutrients and helps maintain normal levels of glucose in the blood.

(6) Yerba mate (*Ilex paraguariensis* A. St.-Hil).

(7) Green tea (*Camellia sinensis*).

(8) Made from colostrum (**milk**) and **egg** yolk.

- **Do you need an “extra” dose of energy at certain times (work meetings, while travelling, exams)?**
- **Would you like to greet the day with greater physical and mental equilibrium?**
- **With Energy Go Stix you have guaranteed energy to handle even the most intense days!**

To perform well, our body needs to be in good physical and mental conditions.

In order to have sufficient energy, our body must know how to “metabolise” the nutrients that give us energy (macronutrients - carbohydrates, fats and proteins) correctly.

Our state of alertness and concentration are crucial for organisation, making decisions or problem-solving at work and when studying.

Energy Go Stix Tropical is a drink with ingredients that boost our physical and mental energy.

### **What does Energy Go Stix Tropical offer?**

- Vitamin A **aids the normal metabolism of iron\*** and the normal functioning **of the immune system.**
- Chromium aids **the normal metabolism of macronutrients** and helps maintain normal levels of **glucose in the blood.\*\***
- Caffeine helps to improve **concentration** and increase **alertness.**

\* Iron is one of the minerals that contributes to normal energy metabolism.

\*\* Glucose is an important source of energy for most body cells, including those in the brain.





**15x5g**  
PACKETS



**75g**  
NET WEIGHT

**MIX 1 PACKET WITH 240 ML OF WATER, ONCE A DAY. YOU CAN TAKE IT WHEN YOU NEED AN EXTRA BOOST OR BEFORE YOUR EXERCISE ROUTINE. AVOID TAKING IT DURING THE 6 HOURS PRIOR TO YOUR USUAL TIME OF GOING TO BED.**

### **INGREDIENTS:**

Maltodextrin, taurine, green tea (*Camellia sinensis*) leaf extract, L-arginine, L-glutamine, acidity regulator (malic acid), natural mango flavor, yerba mate (*Ilex paraguariensis*) leaf extract, creatine, natural passion fruit-type flavor, beta carotene, anti-caking agent (silicon dioxide), acidity regulator (citric acid), natural passion fruit flavor, L-ornithine alpha-ketoglutarate, L-carnitine, eleuthero (*Eleutherococcus senticosus*) root extract, guarana (*Paullinia cupana*) seed extract, maca (*Lepidium meyenii*) root extract, 4Life Transfer Factor™ (made from colostrum (**milk**) and **egg** yolk), sweetener (sucralose), cherry extract, natural pineapple flavor, rhodiola (*Rhodiola rosea*) root extract, American ginseng (*Panax quinquefolium*) root extract, Korean ginseng (*Panax ginseng*) root extract, sweetener (acesulfame potassium), and chromium nitrate.



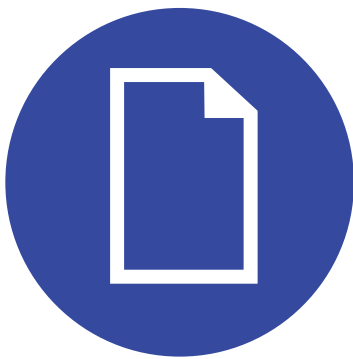
# NUTRITIONAL INFORMATION:

Daily dose: One (1) packet

Daily doses per container: 15

Amount per daily dose		%NRV*
Calories	15 kcal	0,75%
Total carbohydrates	3 g	1,15%
Vitamin A	200 µg	25%
Chromium	25µg	62,5%
Taurine	200 mg	-
Green tea	200 mg	-
Caffeine	13 mg	-
L-Arginine	200 mg	-
L-glutamine	200 mg	-
Yerba Mate	140 mg	-
Caffeine	42 mg	-
Creatine	125 mg	-
L-ornithine alphaketoglutarate	75 mg	-
Carnitine	75 mg	-
Siberian ginseng	75 mg	-
Guarana	60 mg	-
Caffeine	30 mg	-
Maca	50 mg	-
Rhodiola	37 mg	-
Colostrum	35 mg	-
American ginseng	25 mg	-
Korean Ginseng	25 mg	-
Egg yolk	15 mg	-

**\*NRV: Nutrient Reference Values**



Product Profile  
Print ready



Product  
Catalog



Buy  
Now

**Warnings: consult your doctor or pharmacist if you are taking treatment for diabetes.** Do not exceed the recommended daily dose. CONTAINS CAFFEINE (85 mg/PACK). Dietary supplements should not be used as a substitute for a varied and balanced diet and a healthy lifestyle. KEEP OUT OF THE REACH OF CHILDREN. The product contains 80 mg catechins (of which 30 mg (-)-epigallocatechin-3-gallate (EGCG)) per serving. It is not recommended to consume a daily amount of 300 mg of EGCG or more. Should not be consumed by pregnant or lactating women and children below 18 years old. Should not be consumed if you are already consuming other products containing green tea on the same day. Should not be consumed on an empty stomach. Store in a cool dry place.



Follow us:



4Life® products are not intended to diagnose, treat, cure, or prevent any disease.  
Nutrition declarations approved for Europe.  
©2023 4Life Trademarks, LLC, All rights reserved. 071923\_EU\_en